



GSS

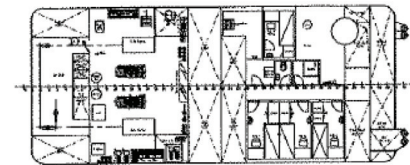
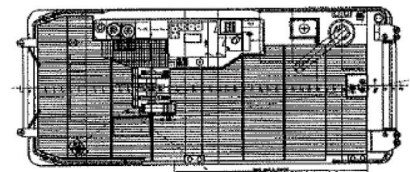
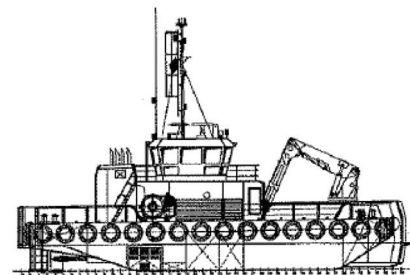
Marine Services

Aileen M

Eurocarrier 2510

Aileen M provides a safe, versatile vessel for all types of marine works. Her layout allows all equipment to be operated from the wheelhouse, providing her operatives a safe stable working environment. She performs her allotted tasks in a stable, reliable manner, taking anchor handling, towing, barge support, cargo transport, survey platform and dive support easily in her stride.

Deck Layout



Specifications

Boat Name	Aileen M
Port of Registry	Greenock UK
Type or Description	Eurocarrier 2510
IMO No.	9570888
Official Number	916898
Call Sign	2DAL6
MMSI	235077287
Build Date	2010
LOA	25 metres
Beam	9.9 metres
Draft	2.8m aft (2.5m Min)
Deck Space/Area	100 sq metres. Forward deck wooden sheathed
Deck Load	80 tonnes. Full stability book
Class	MCA Cat 1 150nm 24hr working Bureau Veritas 1 + Hull Mach Unrestricted Navigation
Propulsion	2 Type CAT C32 engines, power 1,350BHP each
Cooling	Keel cooled
Speed	10 knots max. 8kts cruising
Bollard pull	30 tonnes
Generator(s)	2 Cummins 6CTA8.3-D(M) Output 190Kw
Deck Equipment	
Crane	Heila HLRM 200 – 4SL Remote operated 9000kg @ 16.3 metres – 22000kg @ 7.75 Fitted with 10tonnes boom mounted winch
Winches	1 – 80 tonne deck winch 650m 38mm towing wire 1 – 50 tonne deck winch 1 – 15 tonne tugger winch All winches controlled from wheelhouse
Store/Workshop Area	Yes
Fuel Capacity	90 tonnes / transferrable & metered
Water Capacity	37 tonnes / transferrable
Navigation Equipment	Magnetic compass Satellite compass Autopilot Radar (D)GPS 2 x Electronic chart plotter Echo sounder Doppler speed log Watch keeper alarm AIS Navtex
Comms Equipment	2 – DSC VHF radios 2 handheld VHF radios 2 x GMDSS radios Cell (GSM) q Deck hailer Satellite phone MF/HF radio Email (satellite & GSM) Intercom
Other Equipment	Bow roller 100te SWL Double push bow Mampaey quick release towing hook/Bitts Forward hydraulic fork Forward hydraulic pins Deck flood Lights Search light
Accommodation	5 cabins. 3 single. 2 double Messing facilities All accommodation heated & air conditioned Full LSA for 15 persons (inc crew) @ 60nm (Cat 2)

Crane Lifting Capacity (fwd)

