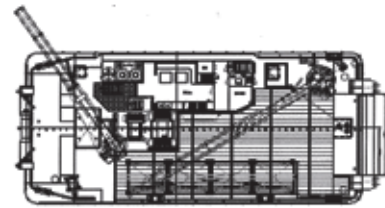
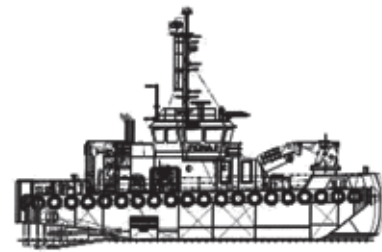




Marilyn M Eurocarrier 2611

The Marilyn M has quickly proved her suitability for a variety of marine projects. Dredge support, cable laying, anchor handling, barge support, wind farm operations and port and harbour construction operations are all easily within her capabilities. Her modern design and specification makes her an efficient, economic vessel providing excellent accommodation and welfare facilities for her operatives.

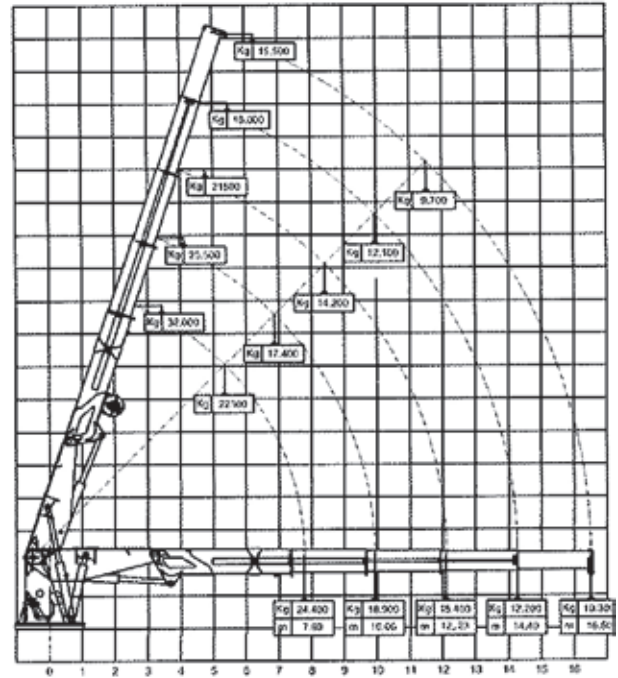
Deck Layout



Specifications

Boat Name	Marilyn M
Port of Registry	Maassluis
Type or Description	Eurocarrier 2611
IMO Number	9731523
Official Number	23979 Z 2015
Call Sign	PCFM
MMSI Number	244700957
Build Date	March 2015
LOA	26.48 metre
Beam	11 metre
Draft	Forward 2.8 metre (tanks 98% full)
Deck Space/Area	125 metres ²
Deck Load	6 tonne per sq metre
Class	MCA Cat 1 150 miles from safe haven. Bureau Veritas 1 + hull & machinery
Propulsion	2 Caterpillar C32, Power 1560hp each
Bow Thruster	250hp, 360 degree
Cooling	Keel cooled
Speed	10 knots
Bollard Pull	33 tonne
Auxiliary Engines	
Generator(s)	2 Caterpillar C9 400 Volt 250 Kva
Deck Equipment	Cranes 2 Fwd / Heila 230- 4SL 25 t @ 7 metre 10.5 t @ 16.31 metre Aft / Heila 140 – 3SL 26 t @ 5.67 metre 10 t @ 12.17 metre Winches 1 x 100 tonne 1 x 50 tonne 1 x 15 tonne tugger
Store/Workshop Area	
Fuel Capacity	100 metre ³ transferrable & metered
Water Capacity	60 metre ³ transferrable & metered
Navigation Equipment	Magnetic compass Electronic compass Radar (D)GPS Electronic chart plotter Echo sounder Watch keeper alarm AIS Navtex Talkback unit Speed log
Comms Equipment	Cell (GSM) phone Satellite phone MF/HF radio 2 x VHF radio Email
Other Equipment	Bow roller Stern roller Double push bow Towing hook/bit Hydraulic towing pins Hydraulic shark jaws Deck flood lights
Accommodation	Number of persons 12, Number of cabins 3 single & 2 double Messing facilities Heated & air-conditioned

Crane Lifting Capacity (fwd)



Crane Lifting Capacity (aft)

