

AILEEN M 25.1m X 9.9m Eurocarrier 2510



BUILT 2010
 LOA 25 METRE
 BEAM 9.9 METRE
 DRAFT 2 METRE
 DECK LOAD 3.5 TONNE PER SQ METRE

AILEEN M
 EUROCARRIER 2510

The performance of our two vessels supplied by the Neptune Yard in Rotterdam convinced us to return there for our latest vessel.

CLASSIFICATION Bureau Veritas 1 + Hull Machinery Special Service UK MCA Code Category 0 Unrestricted Navigation

PROPULSION 2 CAT C32 Engines Total Horse Power 2,700 BHP Twin Disc Reduction Gearboxes Fixed Props in Forward Nozzles Keel Cooled

SPEED 10 Knots

BOLLARD PULL 30 tonnes

GENERATORS 2 X Cummings 190Kw Gensets

CAPACITIES
 FUEL 97 Tonnes
 FRESH WATER 43 Tonnes

NAV EQUIPMENT Magnetic Compass GPS Compass Daylight Viewing Radar Speed Log Echo Sounder Electronic Chart Plotter Watch Keeping Alarm AIS DGPS Navigator NAVTEX Talk Back Unit

COMMUNICATIONS GSM Phone 2 DSC VHF Radios MF/HF Radio E-mail Satellite Phone

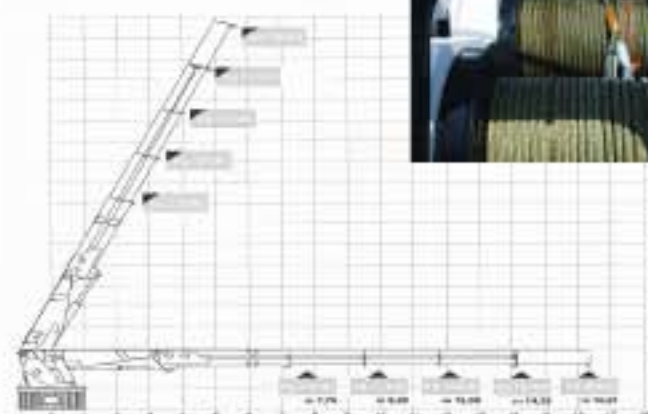
ACCOMMODATION Heated and Air Conditioned for up to 7 Persons



AILEEN M 25.1m X 9.9m Eurocarrier 2510



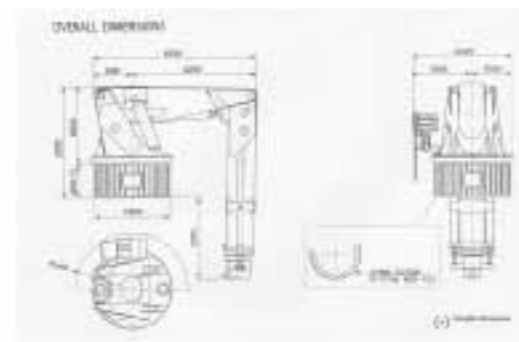
HRLM200 - 4SL
 CRANE LIFTING CAPACITY



DECK AREA 100 Sq Metre
DECK LOAD 350 tonnes
DECK EQUIPMENT Hella HLRM Crane 200—4SL 9000kg @ 16.3 metre 22000kg @ 7.75metre

WINCHES 80 tonne Deck Winch 50 tonne Deck Winch 15 tonne Tugger Winch Wheelhouse Winch Controls

OTHER EQUIPMENT Towing Hook Push Bow Bow Roller Fuel Transfer Pump 60 m³ /hour Freshwater Transfer Pump 60 m³ /hour Anchor Handling Equipment Forward Hydraulic Fork Forward Hydraulic Pins



MAXIMUM TORQUE 178 T/M
SLEWING TORQUE 23000 kg/m
MAX WORKING PRESSURE 270 bar



www.gssplant.co.uk

MAIN OFFICE **Tel:** +44 (0)1436 821277 or +44 (0)1436 821299
 Rhu Marina, Rhu, Argyll & Bute, G84 8LH Scotland, UK
Fax: +44 (0)1436 821288 **E-mail:** info@gssplant.co.uk

WELSH OFFICE Milford Haven **Tel:** +44 (0)7789 652833
 SOUTHAMPTON OFFICE **Tel:** +44 (0)78185 19208
 DUTCH OFFICE Aalsmeer, Holland **Tel:** +31 651 853 242