

FIONA F 26.48m x 11m Eurocarrier 2611



LAUNCH DATE JANUARY 2011

LOA 26.48 METRE
BEAM 11M

DRAUGHT WITH TANKS
98% FULL 2.8 METRE

DECK LOAD 6 TONNE
PER SQ METRE

FIONA F EUROCARRIER 2611 MULTI PURPOSE WORK VESSEL

Entering services as the largest and most robust vessel in the GSS fleet.

CLASSIFICATION Bureau Veritas + I 3/3
Hull and Machinery Unrestricted
MCA Cat 0 Unrestricted

NAVIGATION 12 Passengers

PROPULSION 2 CAT 1560hp

SPEED 10 Knots

BOLLARD PULL 33 tonne

GENERATORS 2

CAPACITIES

FUEL

100 Metre³
Transferable at 80 Metre³

WATER

60 Metre³
Transferable at 80 Metre³

NAV EQUIPMENT

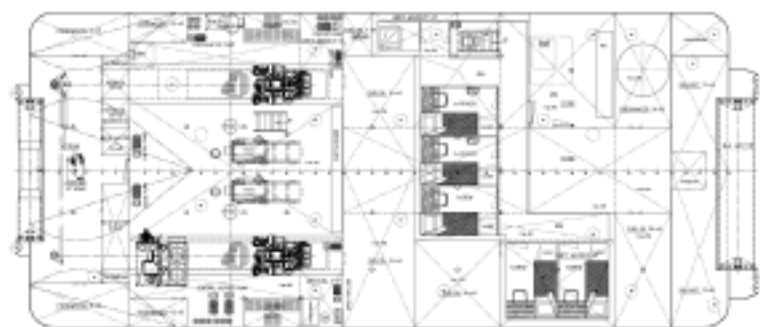
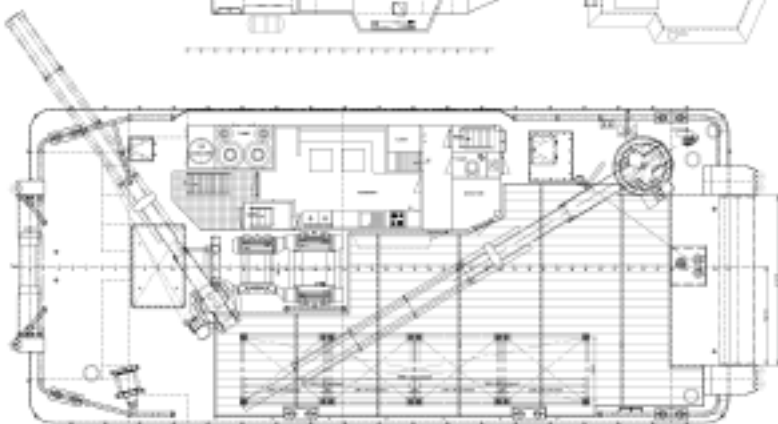
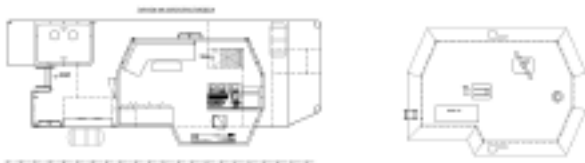
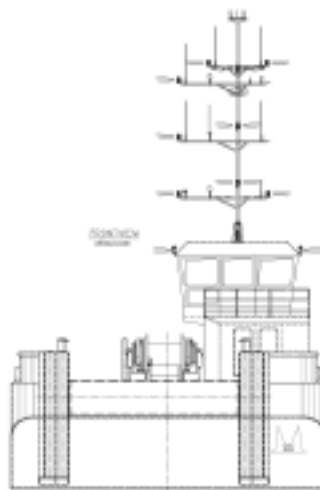
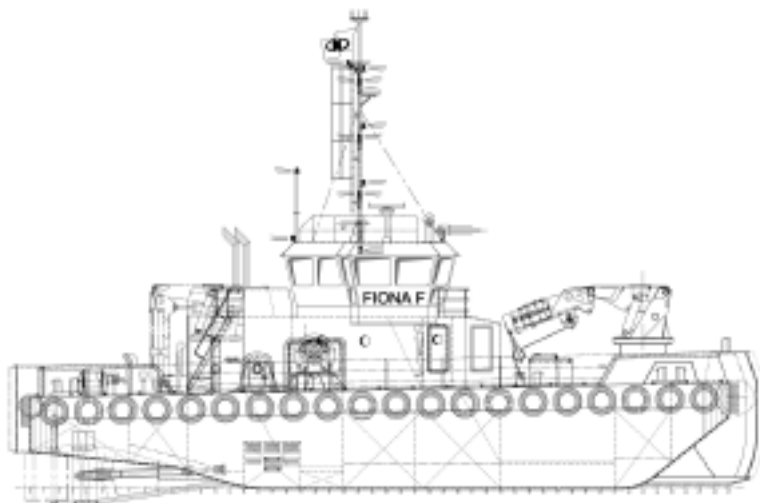
Magnetic Compass
GPS Compass
Daylight Viewing Radar
Speed Log
Echo Sounder
Electronic Chart Plotter
Watch Keeping Alarm
AIS
DGPS Navigator
NAVTEX
Talk Back Unit

COMMUNICATIONS

Satellite Phone
GSM Phone
2 DSC VHF Radios
MF/HF Radio
E-mail

ACCOMMODATION

Heated and Air Conditioned
Cabins for up to 7 Persons



DECK EQUIPMENT

Fwd Crane 230 t/m 4sl

Lifting capacity:
25t @ 7m,
19t @ 10m,
15.5t @ 12.10m,
12.4t @ 14.26m,
10.5t @ 16.31m

Aft Crane 140 t/m 3sl

Lifting capacity:
26t @ 5.67m,
18t @ 7.8m,
12.5t @ 12.5m,
10t @ 12.17m

Winches

1 x 80t winch,
1 x 50t winch,
1 x 15t tigger winch

Hydraulic tow pins and shark jaws fwd
with wide bow roller

Manual tow pins and roller aft

Double push logs fwd, single push logs aft

35t quick release towing hook