



LAURA M

MULTI-ROLE VESSEL MRV20

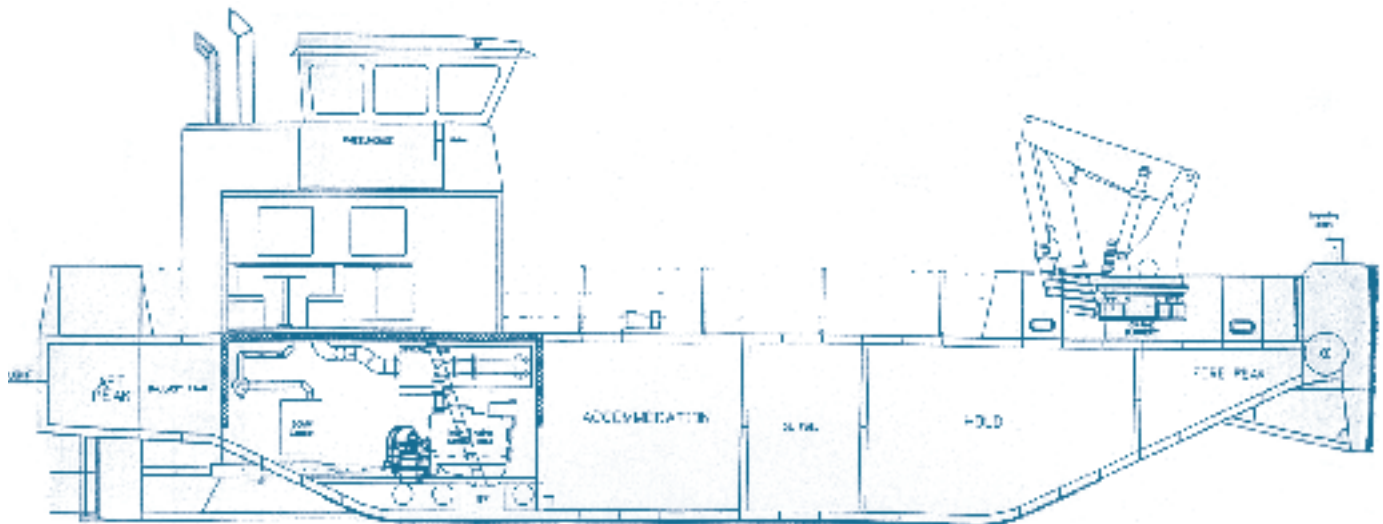
One of the strongest and most versatile boats in the sector.

The Laura M is designed to maximise the capabilities of a 20m by 8m working platform. The wheelhouse and all deck equipment have been situated as far aft as possible to provide a clear and spacious working deck.

Laura M will take a 40 ft container on deck or alternatively, can accommodate both a 20 ft storage box and an 18 ft portacabin site office simultaneously and comfortably within its deck capacity of some 50 tonnes.

LAURA M 20mX8m MRV

BUILT: UK 2002
LOA: 19.50m
BEAM: 8.00m
DRAFT AFT: 1.8m
DEPTH MOULDED: 2.70m
DISPLACEMENT: 205 tonnes full load
DECK LOAD: 50 tonnes



NAV EQUIPMENT: 3 x VHF
Radar / Plotter
DGPS
Echosounder / Fishfinder
Log
COMMS EQUIP: Mobile Phone
CLASS: MCA COP CAT 2-60 miles
PROPULSION: Twin Cummins NTA14M,
rated 392 Kw
(525 bhp) @ 2100 rpm
GEARBOXES: Twin Disc model MG5114DC
reverse reduction gearbox with
reduction ratio of 3.43:1
SPEED: Cruising speed 8,5 knots
BOLLARD PULL: 12 tonnes

FUEL: 26000 litres transferable / metered
GENERATOR: Onan model 22.5MDKAF with
240v/110 throughout
ADDITIONAL: Fresh water capacity 14500 litres
transferable
Galley and Cooker
Power points in Wheelhouse
Cummins model 68T5.9 D(M)
Hydraulic power pack
Sleeping accommodation for
4 crew in two cabins
Day accommodation for up to 12
passengers in deck house.

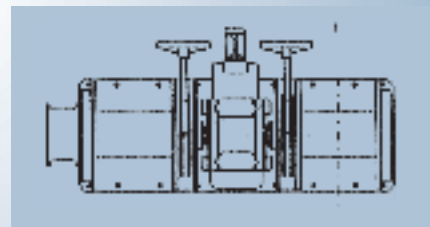
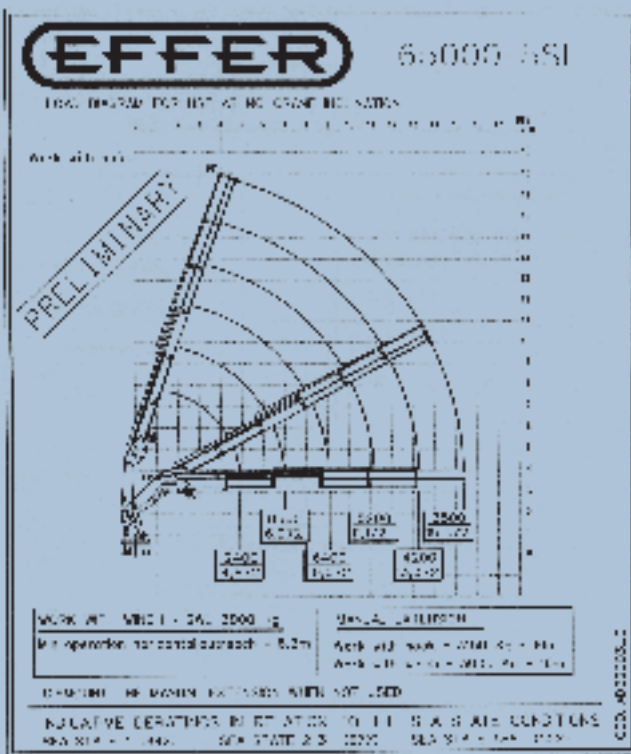
GSS
**Gareloch Support
Services (Plant) Ltd**

Gareloch Support Services (Plant) Ltd
Rhu Marina, Rhu
Argyll & Bute G84 8LH, Scotland
Tel: 01436 821277 or 01436 821299
Fax: 01436 821288
E-mail: info@gssplant.co.uk
Website: www.gssplant.co.uk

DECK EQUIPMENT

CRANE: Effer model 65000/5s with lift capacity:
23 tonnes @ 2.54m
8 tonnes @ 7.30m
5 tonnes @ 11.50m
3 tonnes @ 15.70m

CRANE LIFTING CAPACITY



ANCHOR HANDLING WINCH
Spencer Carter 20 tonnes
double drum winch, individually driven

MOORING WINCHES
4 X Spencer Carter 2 tonnes
winches equipped with 150m wire