

## MAGGIE M 22mX9m EUROCARRIER



LAUNCHED JUNE 2009

BUREAU VERITAS	1 3/3 (E) MACH Special Service Multi Purpose
WORKBOAT CODE	Cat 2 — 60 Miles 12 Passengers
LOA	21.6 Metres
BEAM OA	9.04 Metres
DRAFT DRY	1.80 Metres
DRAFT LOADED	3.00 Metres
NET TONNAGE	91.87
DECK LOAD	73 Tonnes
DECK AREA	150 Sq Mts

# MAGGIE M

## EUROCARRIER 22

The Maggie M was built by Neptune Marine in Holland and Launched in July 2008. Her generous deck area and high deck load capacity make her a strong and flexible performer in the Marine Construction Field.

Her three cabins offer generous accommodation and her on board welfare provision is to a high standard. Her Wheelhouse offers good all round vision and is equipped with an impressive array of modern navigation and communication electronics.

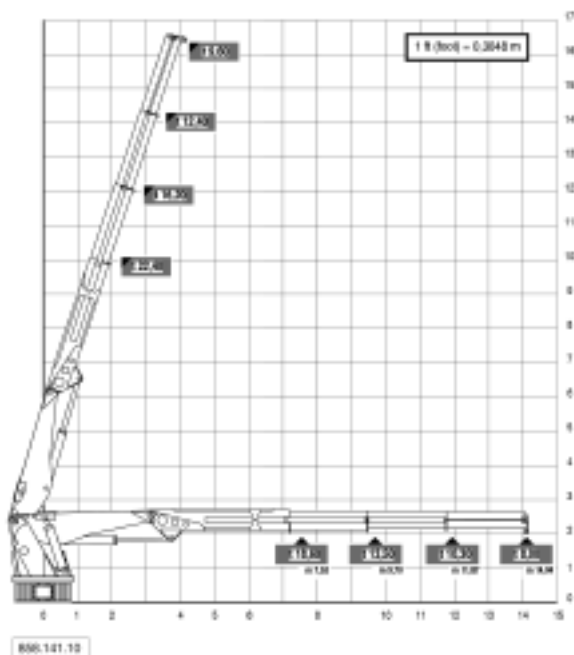
Her work load has included Wind Farm operations and she is ready to take her part in all types of Marine Construction installing Sea Water Outfalls, Dredging Support, Port and Harbour Construction.

NAV EQUIPMENT	Magnetic Compass Furino FR16505 Radar Navtex Receiver Seapilot 75 Autopilot Furuno Satellite Compass FA-50 AIS System Marble Watchkeeping Alarm Tron SART Transponder
COMMS EQUIPMENT	Furuno GP150 DGPS GMDSS VHF Radio x 2 GSM & Satellite Phone
PROPULSION	2 x MitsubishiS12 A2 800hp @ 1800rpm
GEARBOXES	4.59.1 Twin DiskMG5222 Hydraulic Power Pack
SPEED	10 Knots Cruising
BOLLARD PULL	20 Tonnes
GENERATORS	John Deere120KVA 69 Kw Closed Cooling John Deere 120Kva 75Kw Radiator Cooled
HP AIR	On Deck from Compressor
FUEL CAPACITY	57,000 Litres Transferable at 40m <sup>3</sup> per Hour
FRESH WATER CAPACITY	27,000 Litres Transferable at 40m <sup>3</sup> per Hour

**GSS**  
**Gareloch Support  
Services (Plant) Ltd**

# MAGGIE M 22mX9m EUROCARRIER

## CRANE LIFTING CAPACITY

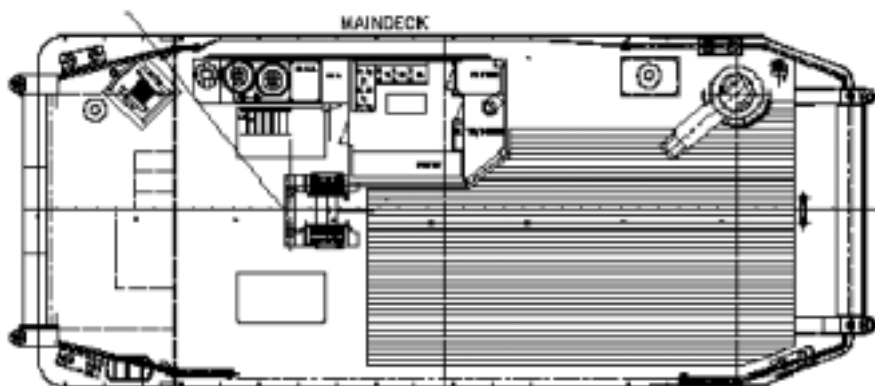


## DECK EQUIPMENT

Remote Control Crane  
 Heila Model HLRM 140—3SL  
 18.6 Tonnes at 7.53m  
 13.5 Tonnes at 9.70m  
 10.3 Tonnes at 11.87m  
 8.00 Tonnes at 14.04 m  
 5 Tonne Boom Mounted Winch

## WINCHES

50 Tonne Anchor Handling Winch with Split Drum  
 10 Tonne Bridge Controlled Tugger Winch  
 Crane Mounted Winch



## ACCOMMODATION

Day Mess, WC, 3 Heated and AC Cabins and Galley Facilities

## ELECTRICAL SYSTEM

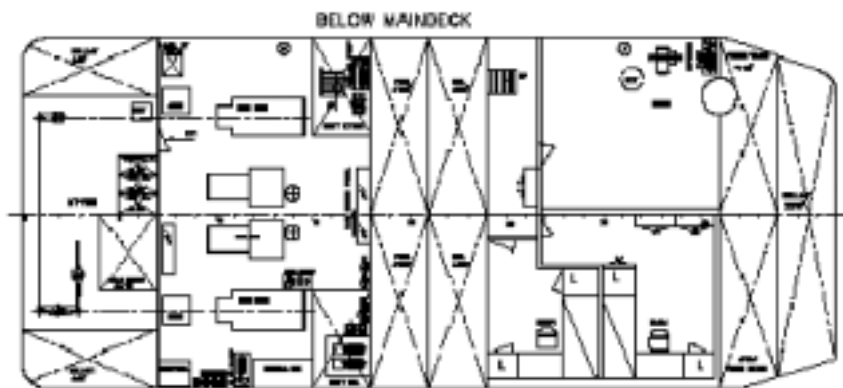
220v AC Supply to UK Sockets.  
 24v Supply  
 110v Supply on Deck

## TOWING HOOK

30tonne Quick Release

## ADDITIONAL

Large Bow Roller  
 Large Stern Roller  
 Push Logs Bow and Stern



**GSS**  
 Gareloch Support  
 Services (Plant) Ltd

MAIN OFFICE  
 Rhu Marina, Rhu,  
 Argyll & Bute G84 8LH,  
 Scotland  
**Tel:** 01436 821277  
 or 01436 821299  
**Fax:** 01436 821288

DUTCH OFFICE  
 Aalsmeer, Holland  
**Tel:** +31 651 853 242

**E-mail:** info@gssplant.co.uk  
**Website:** www.gssplant.co.uk