

MORAG M 22mX9m EUROCARRIER



LAUNCHED JANUARY 2009

| | |
|----------------|--|
| BUREAU VERITAS | 1 3/3 (E) MACH Special Service Multi Purpose |
| WORKBOAT CODE | Cat 2 — 60 Miles 12 Passengers |
| LOA | 21.6 Metres |
| BEAM OA | 9.04 Metres |
| DRAFT DRY | 1.80 Metres |
| DRAFT LOADED | 3.00 Metres |
| NET TONNAGE | 91.87 |
| DECK LOAD | 73 Tonnes |
| DECK AREA | 150 Sq Mts |

MORAG M

EUROCARRIER 22

A sister ship to Maggie M, Morag M was launched in January 2009. Her specification is largely similar to her sister ship and she is a robust vessel promising reliable performance.

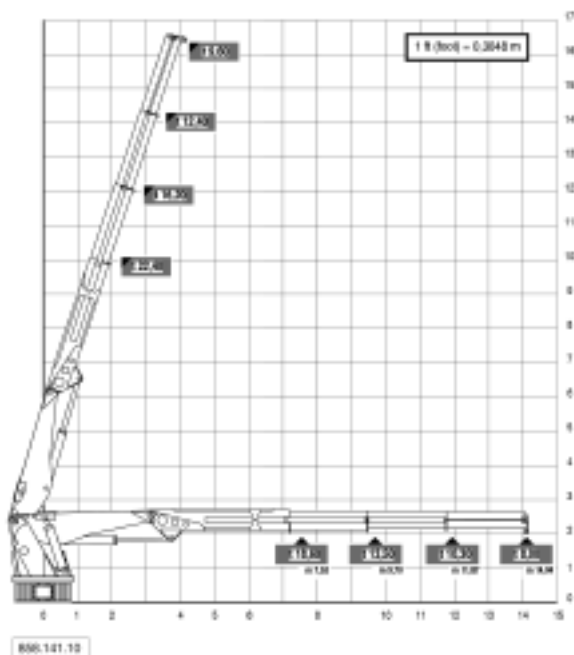
Her wheelhouse offers excellent all round visibility and is equipped with an impressive array of modern navigation and communication electronics.

The welfare and accommodation facilities on board are excellent and she is ready for her duties on Offshore Energy projects, Sea Water Outfall Construction, Diving Support, Anchor Handling, Jetty, Port and Harbour Construction and other Marine Projects.

| | |
|----------------------|--|
| NAV EQUIPMENT | Magnetic Compass Furino FR16505 Radar Navtex Receiver Seapilot 75 Autopilot Furuno Satellite Compass FA-50 AIS System Marble Watchkeeping Alarm Tron SART Transponder |
| COMMS EQUIPMENT | Furuno GP150 DGPS GMDSS VHF Radio x 2 GSM & Satellite Phone |
| PROPULSION | 2 x Caterpillar C18 2 x 600Pk-1800rpm |
| GEARBOXES | 4.59.1 Twin Disk MG5222 Hydraulic Power Pack |
| SPEED | 10 Knots Cruising |
| BOLLARD PULL | 16 Tonnes |
| GENERATORS | John Deere 120KVA 69 Kw Closed Cooling John Deere 120Kva 75Kw Radiator Cooled |
| HP AIR | On Deck from Compressor |
| FUEL CAPACITY | 57,000 Litres Transferable at 40m ³ per Hour |
| FRESH WATER CAPACITY | 27,000 Litres Transferable at 40m ³ per Hour |

MORAG M 22mX9m EUROCARRIER

CRANE LIFTING CAPACITY

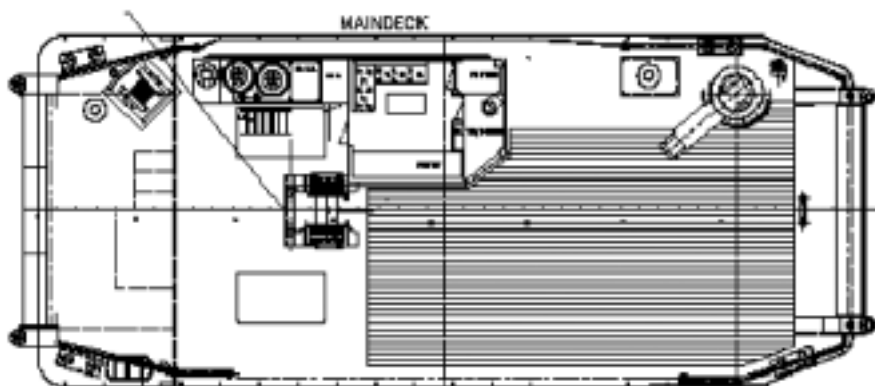


DECK EQUIPMENT

- Remote Control Crane
- Heila Model HLRM 140—3SL
- 18.6 Tonnes at 7.53m
- 13.5 Tonnes at 9.70m
- 10.3 Tonnes at 11.87m
- 8.00 Tonnes at 14.04 m
- 5 Tonne Boom Mounted Winch

WINCHES

- 50 Tonne Anchor Handling Winch with Split Drum
- 10 Tonne Bridge Controlled Tugger Winch
- Crane Mounted Winch



ACCOMMODATION

- Day Mess, WC, 3 Heated and AC
- Cabins and Galley Facilities

ELECTRICAL SYSTEM

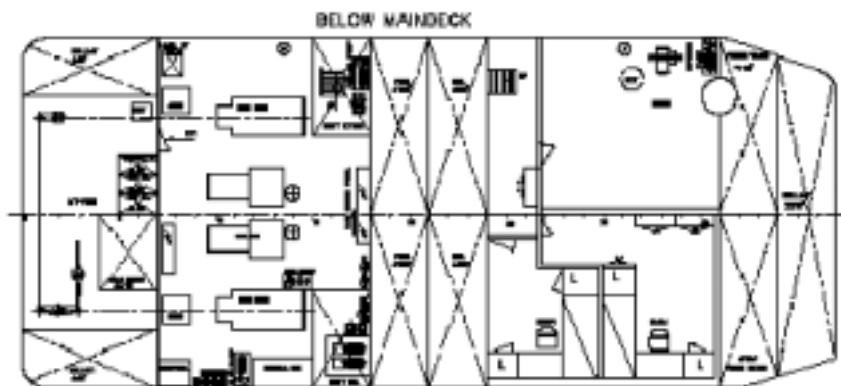
- 220v AC Supply to UK Sockets.
- 24v Supply
- 110v Supply on Deck

TOWING HOOK

- 30tonne Quick Release

ADDITIONAL

- Large Bow Roller
- Large Stern Roller
- Push Logs Bow and Stern



GSS 
**Gareloch Support
 Services (Plant) Ltd**

MAIN OFFICE
 Rhu Marina, Rhu,
 Argyll & Bute G84 8LH,
 Scotland
Tel: 01436 821277
 or 01436 821299
Fax: 01436 821288

DUTCH OFFICE
 Aalsmeer, Holland
Tel: +31 651 853 242

E-mail: info@gssplant.co.uk
Website: www.gssplant.co.uk